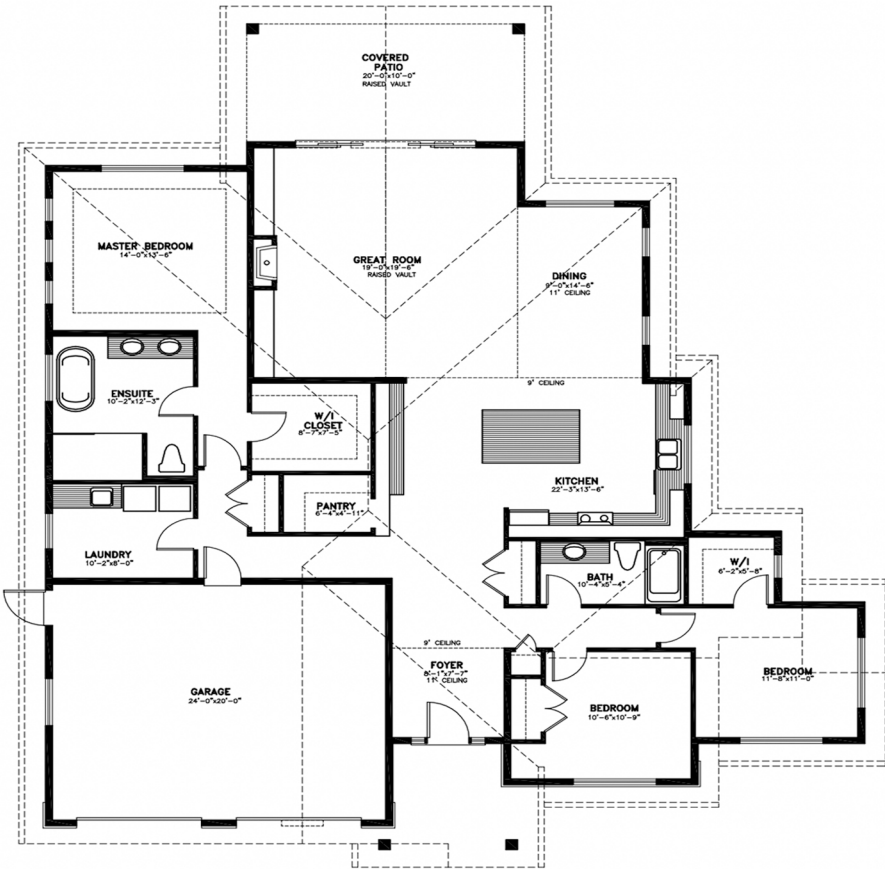


Featuring:

The Blueback

This amazing WestCoast-inspired 3 bedroom, 2 bathroom home is the latest offering from the highly acclaimed Bayshore Construction. Full of professionally designed finishes and many exquisite details, this modern farm house has it all!

Located in the highly anticipated brand new Eagle View Properties, this home is 'The Blueback' design with an ideal open concept floor plan. Featuring raised ceilings and 7 1/2 inch engineered hardwood flooring throughout the main floor, this home boasts many stunning details including custom wood vents, 5-piece window trims, a Kingsman Linear fireplace, and so much more.



The property is fully fenced with 100% hand built custom cedar fencing and fully landscaped with irrigation, offering a large back patio with vaulted cedar soffits. Built with comfort and efficiency in mind, this home also has a Trane heat pump, NG hot water on demand, and an NG BBQ hook up. All of this on a beautiful lot just 3 blocks from Parksville's beaches.

LINDBERG CAD SERVICES

885 FISHERMAN'S CIRCLE, PARKSVILLE, B.C. V9P-1Z4 248-5449



FRONT ELEVATION