

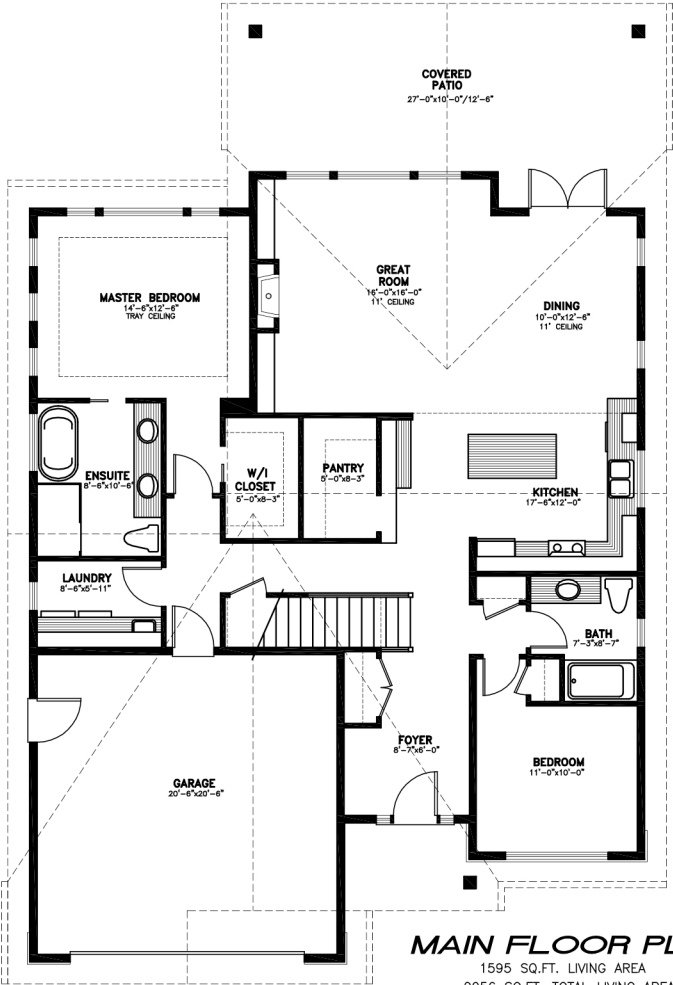
Featuring:

The Chesterman

This stunning 3 bedroom, 3 bathroom home is the latest offering from the highly acclaimed Bayshore Construction. Full of professionally designed finishes and many exquisite details, this modern home has it all!

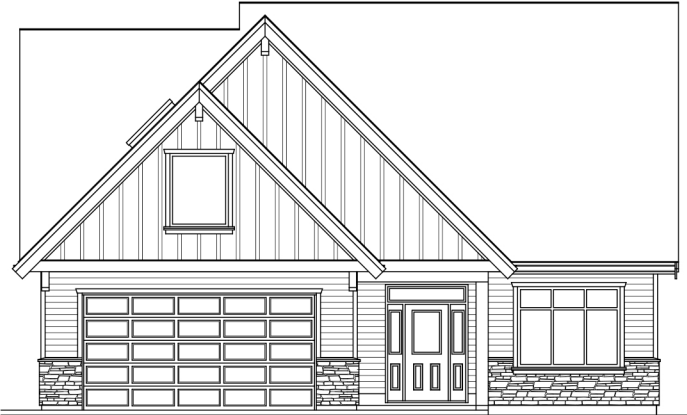
Located in the highly anticipated brand new Eagle View Properties, this home is 'The Chesterman' design, with an ideal open concept floor plan. Featuring raised ceilings, there is beautiful wide plank engineered hardwood flooring, a large kitchen with quartz countertops a hidden walk-in pantry, a spacious great room, casement windows, and a large glass door into the outdoor living area, and even a bonus room for your guests, teens, hobbies and more.

The luxurious primary suite has sideviews and a spa-like, freestanding bathtub with walk-in tile shower and walk-in closet. Built with comfort and efficiency in mind, this home also has a Trane heat pump, NG hot water on demand, and an HRV system. All of this on a fenced lot just 1 block from the beach.



LINDBERG CAD SERVICES

885 FISHERMAN'S CIRCLE, PARKSVILLE, B.C. V9P-1Z4 248-5449



FRONT ELEVATION

