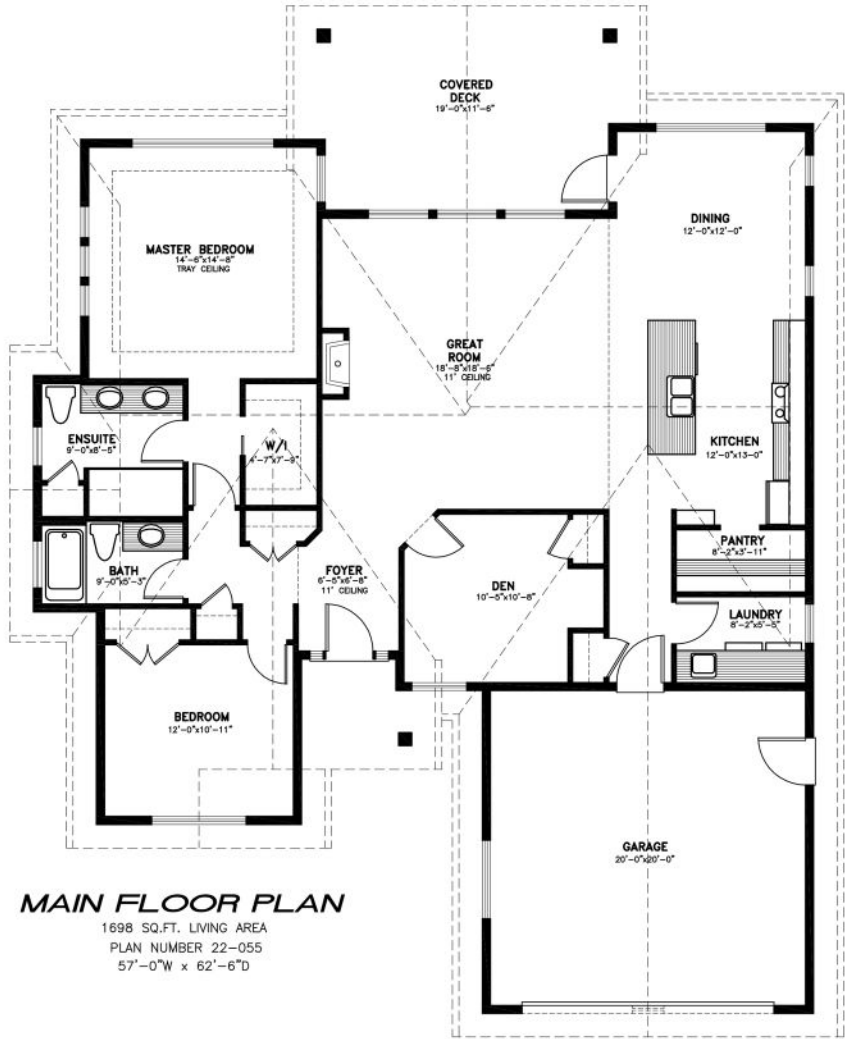


Featuring:

The Sombrio

This gorgeous contemporary 3 bedroom, 2 bathroom home is the latest offering from the highly acclaimed Bayshore Construction. Full of professionally designed finishes and many exquisite details, this rancher home has it all!

Located in the highly anticipated brand new Eagle View Properties, this home is 'The Sombrio' design, with an ideal open concept floor plan. Featuring raised ceilings, there is beautiful wide plank engineered hardwood flooring, a large galley kitchen with quartz countertops a butler's walk-in pantry, a spacious great room, casement windows, and a large glass door into the outdoor living area.

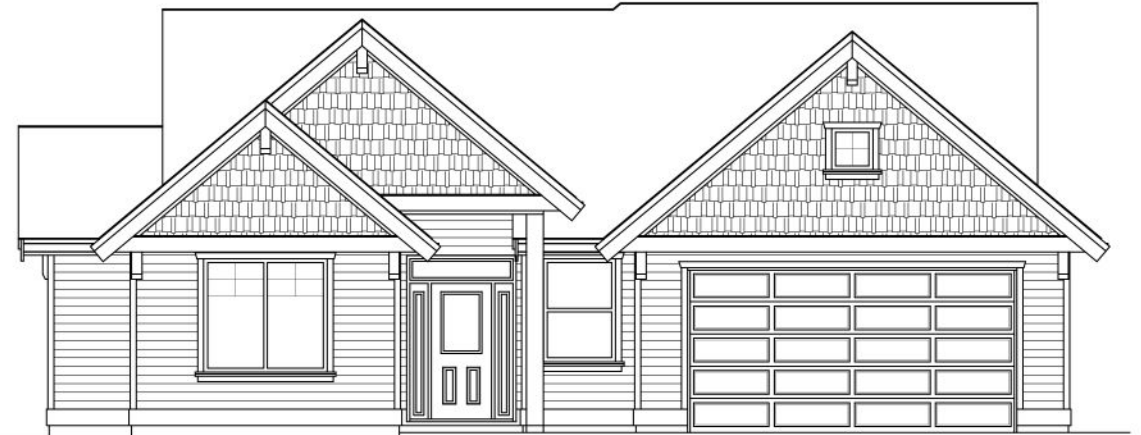


MAIN FLOOR PLAN

1698 SQ.FT. LIVING AREA
PLAN NUMBER 22-055
57'-0"W x 62'-6"D

LINDBERG CAD SERVICES
885 FISHERMAN'S CIRCLE, PARKSVILLE, B.C. V9P-1Z4 248-5449

The luxurious primary suite boasts a large walk-in tile shower and walk-in closet. Built with comfort and efficiency in mind, this home also has a Trane heat pump, NG hot water on demand, and an HRV system. All of this on a fully-fenced lot just 1 block from the beach.



FRONT ELEVATION